

BUILD YOUR OWN BUMBLEBEE NEST



BLUE DIAMOND®

Garden Centres

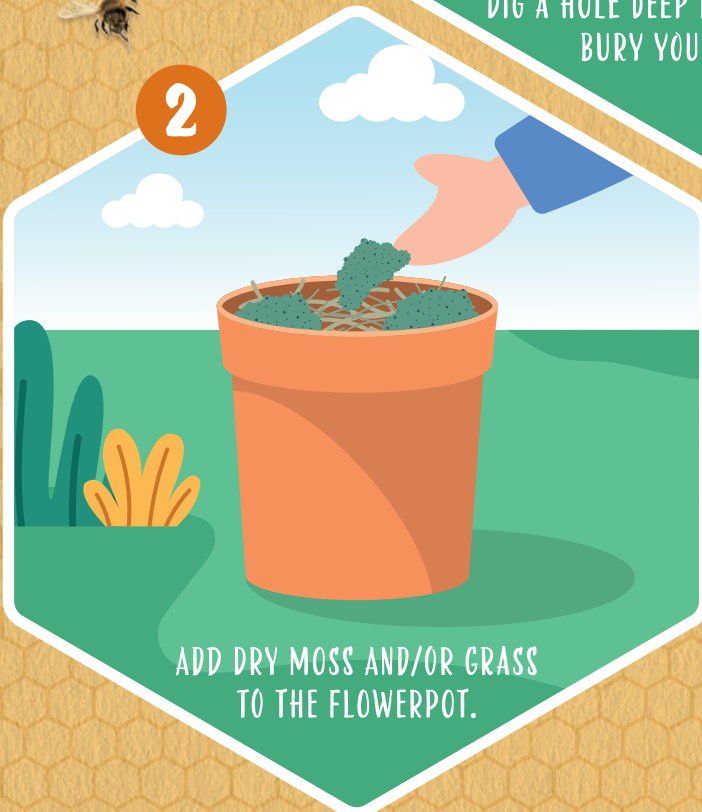
Before starting you will need:

- A sheltered spot that gets some sun (ideally under a bush)
- A 20cm wide (4L) terracotta flowerpot with a hole in the base
- Dry grass and/or moss
- A trowel

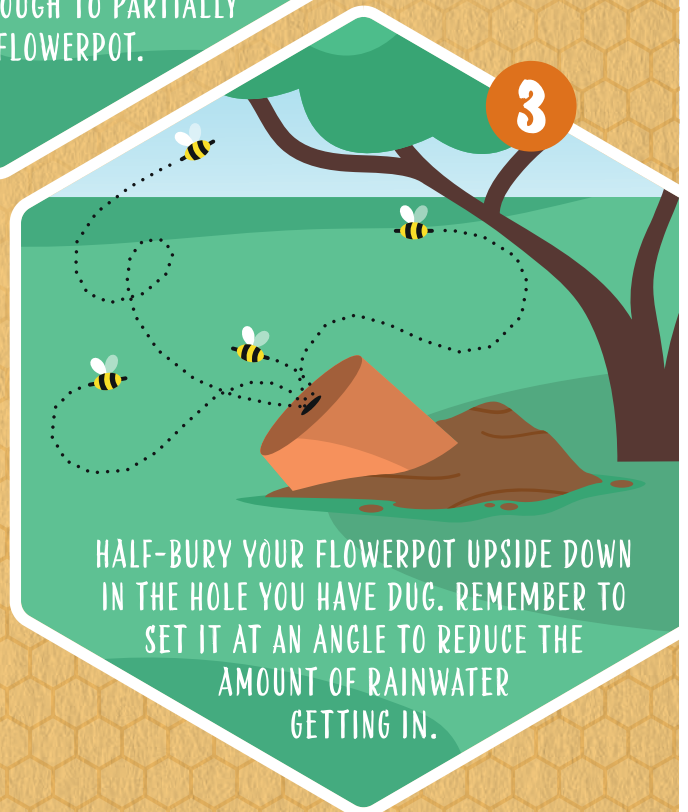


CHOOSE A SHELTERED SPOT IN YOUR GARDEN THAT DOES NOT GET TOO HOT OR COLD AND GETS SUN FOR ABOUT HALF OF THE DAY.

DIG A HOLE DEEP ENOUGH TO PARTIALLY BURY YOUR FLOWERPOT.



ADD DRY MOSS AND/OR GRASS TO THE FLOWERPOT.



HALF-BURY YOUR FLOWERPOT UPSIDE DOWN IN THE HOLE YOU HAVE DUG. REMEMBER TO SET IT AT AN ANGLE TO REDUCE THE AMOUNT OF RAINWATER GETTING IN.

SCAN TO READ MORE ABOUT OUR 'PLAN BEE' PROJECT INCLUDING OTHER WAYS YOU CAN HELP SUPPORT BEES OR VISIT BLUEDIAMOND.GG/PLAN-BEE

